

Step 1: Make two Control Stick Pushrod Assemblies from F-1264 Control Stick Pushrods and the hardware called out in Figure 1.

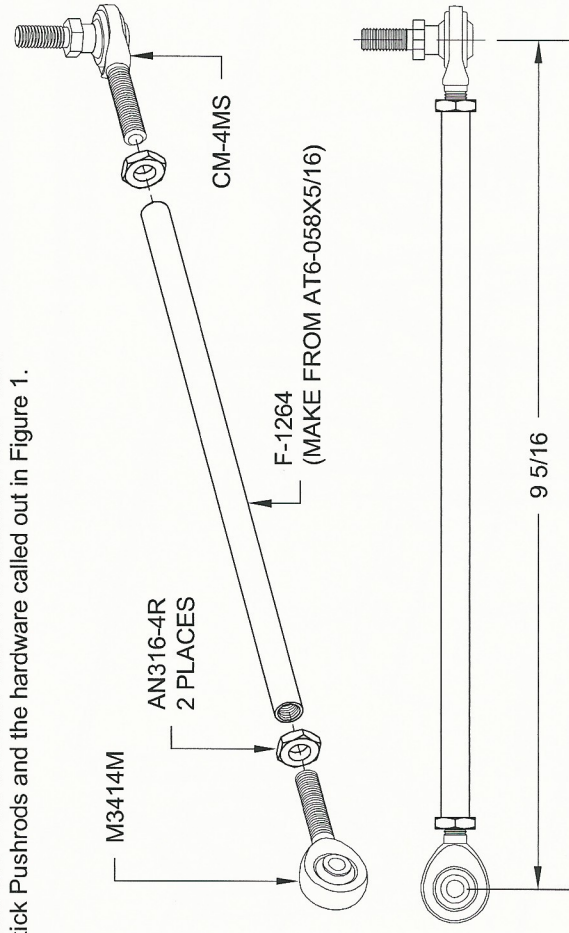


FIGURE 1: CONTROL STICK PUSHROD ASSEMBLY
2 REQUIRED

Step 2: Clamp the BUSHING BS .245 X .375 X 2 Brass Bushings in a bench vise (be careful not to over tighten or gouge the bushing), then drill the inside diameter using a 1/4 bit.

Step 3: Use a file to progressively remove material from the ends of both BUSHING BS .245 X .375 X 2 Brass Bushings until they closely fit between the flanges of the brackets on both ends of the WD-1210 Control Column. See Figure 2.

Step 4: Use a file to progressively remove material from the ends of the tubes in the WD-1212 Control Sticks which sleeve the BUSHING BS .245 X .375 X 2 Brass Bushings. Remove material until, when bolted in place, the brackets on the WD-1210 Control Column clamp on the brass bushings and just clear the tubes. See Figure 2.

Step 5: Attach the WD-1212 Control Sticks to the WD-1210 Control Column using the hardware called out in Figure 2.

Step 6: Attach the outboard ends of the Control Stick Pushrod Assemblies to the WD-1212 Control Sticks as shown in Figure 2.

Step 7: Attach the inboard ends of the Control Stick Pushrod Assemblies to the F-1263A & B Flaperon Mixer Bellcranks as shown in Figure 2.

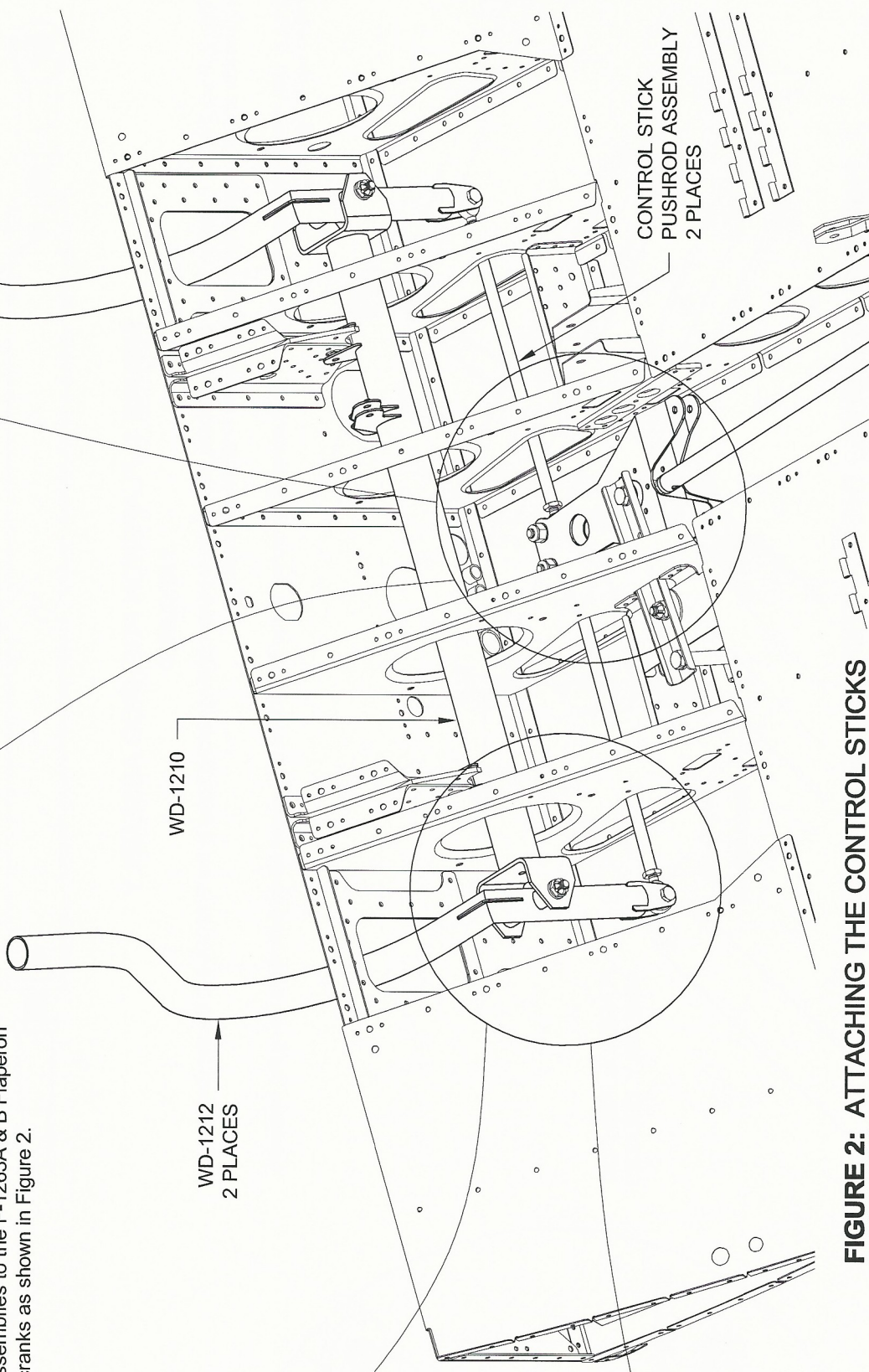
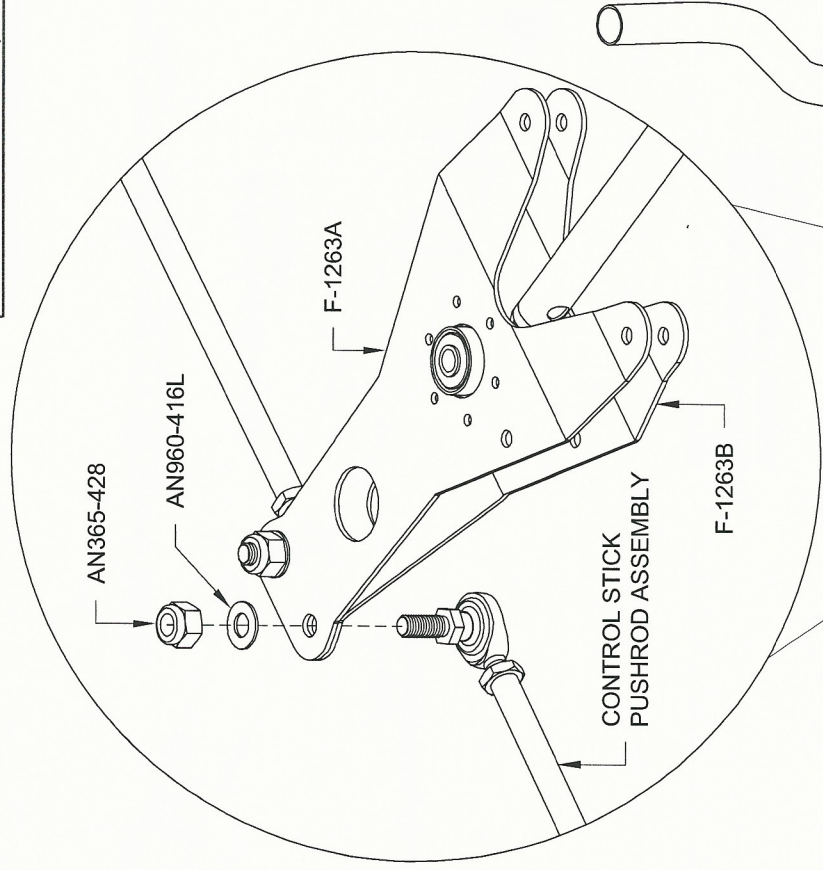


FIGURE 2: ATTACHING THE CONTROL STICKS